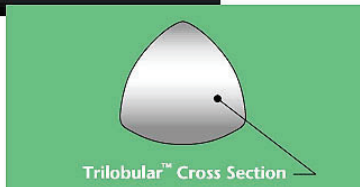
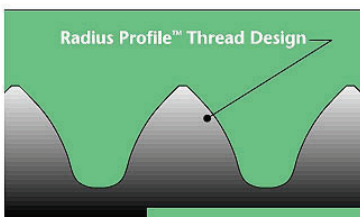
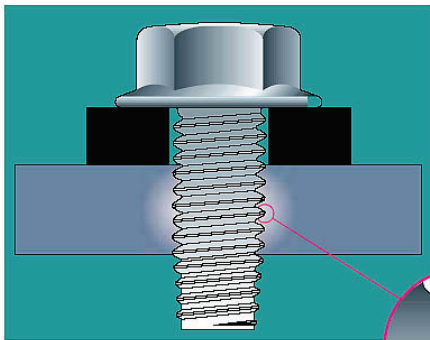




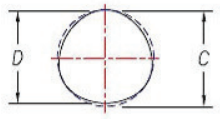
TAPTITE 2000® Screws and Bolts



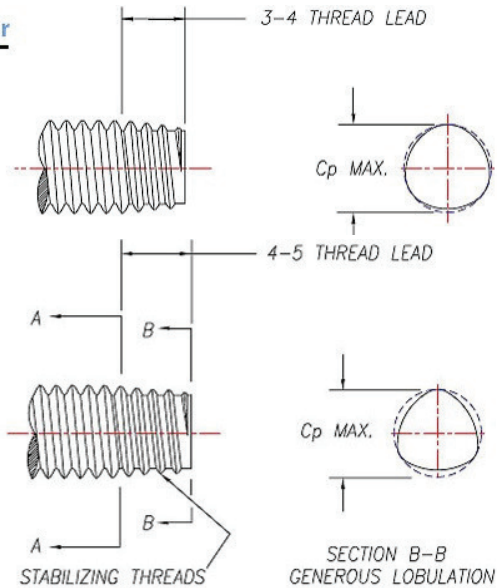
For M5/#12 and Smaller



For M6/1/4" and Larger



SECTION A-A
MODERATE LOBULATION



Advantages of the TAPTITE 2000® Fastener

- "Ergonomically" Friendly
- "Assembly" Friendly
- Superior Vibration Resistance
- Excellent Axial Alignment
- Low End Load
- High Strip-to-Drive Ratio
- High Prevailing Torque
- Excellent Torque Tension Relationship

SCREW SIZE	SCREW BODY DIMENSIONS				Point Cp Max
	C		D		
	Max	Min	Max	Min	
Metric Sizes					
MR1.0 x 0.25	1.000	0.955	0.975	0.924	0.85
MR1.2 x 0.25	1.200	1.155	1.175	1.124	1.05
MR1.4 x 0.30	1.405	1.355	1.375	1.317	1.23
MR1.6 x 0.35	1.610	1.530	1.575	1.486	1.40
MR1.8 x 0.35	1.810	1.730	1.775	1.686	1.60
MR2.0 x 0.40	2.010	1.930	1.970	1.880	1.77
MR2.2 x 0.45	2.210	2.120	2.165	2.064	1.95
MR2.5 x 0.45	2.520	2.430	2.475	2.374	2.25
MR3.0 x 0.50	3.020	2.930	2.970	2.867	2.72
MR3.5 x 0.60	3.520	3.420	3.460	3.345	3.17
MR4.0 x 0.70	4.020	3.920	3.950	3.832	3.61
MR4.5 x 0.75	4.520	4.410	4.445	4.316	4.08
MR5.0 x 0.80	5.020	4.910	4.940	4.810	4.55
MR6.0 x 1.00	6.030	5.900	5.930	5.780	5.38
MR7.0 x 1.00	7.030	6.900	6.930	6.800	6.38
MR8.0 x 1.25	8.030	7.870	7.910	7.710	7.23
MR9.0 x 1.25	9.030	8.870	8.910	8.710	8.23
MR10 x 1.50	10.030	9.850	9.880	9.660	9.08
MR12 x 1.75	12.040	11.830	11.870	11.610	10.92
MR14 x 2.00	14.040	13.810	13.840	13.560	12.77
MR16 x 2.00	16.040	15.810	15.840	15.560	14.76
MR18 x 2.50	18.040	17.760	17.790	17.450	16.46
MR20 x 2.50	20.040	19.760	19.790	19.450	18.45

SCREW SIZE	SCREW BODY DIMENSIONS				Point Cp Max
	C		D		
	Max	Min	Max	Min	
Inch Sizes					
IR0 x 80	0.0626	0.0586	0.0613	0.0570	0.0600
IR2 x 56	0.0880	0.0840	0.0862	0.0818	0.0770
IR3 x 48	0.1010	0.0970	0.0989	0.0944	0.0890
IR4 x 40	0.1138	0.1098	0.1113	0.1067	0.0990
IR5 x 40	0.1268	0.1228	0.1243	0.1197	0.1120
IR6 x 32	0.1413	0.1353	0.1382	0.1314	0.1230
IR8 x 32	0.1674	0.1614	0.1643	0.1575	0.1490
IR10 x 24	0.1934	0.1874	0.1892	0.1822	0.1690
IR10 x 32	0.1936	0.1876	0.1905	0.1837	0.1750
IR12 x 24	0.2194	0.2134	0.2152	0.2082	0.1950
IR1/4 x 20	0.2534	0.2474	0.2484	0.2411	0.2200
IR5/16 x 18	0.3158	0.3098	0.3102	0.3029	0.2790
IR3/8 x 16	0.3784	0.3724	0.3721	0.3646	0.3370
IR7/16 x 14	0.4409	0.4349	0.4338	0.4260	0.3940
IR7/16 x 20	0.4412	0.4520	0.4362	0.4289	0.4070
IR1/2 x 13	0.5033	0.4973	0.4956	0.4877	0.4530
IR9/16 x 12	0.5668	0.5588	0.5585	0.5484	0.5110
IR5/8 x 11	0.6294	0.6214	0.6203	0.6100	0.5690

Length Tolerance - Metric per ANSI B18.6.7M	
Nominal Screw Length	Tolerance on Length
to 3mm inclusive	±0.2
over 3 to 10mm inclusive	±0.3
over 10 to 16mm inclusive	±0.4
over 16 to 50mm inclusive	±0.5
over 50mm	±1.0

Length Tolerance - Inch per ANSI B.18.6.3		
Nominal Screw Length	Nominal Screw Size	
	#0 - #12	1/4" - 1/2"
	Tolerance on Length (inches)	
to 1/2" inclusive	+0, -.020	+0, -.030
over 1/2" to 1" inclusive	+0, -.030	+0, -.030
over 1" to 2" inclusive	+0, -.060	+0, -.060
over 2"	+0, -.090	+0, -.090